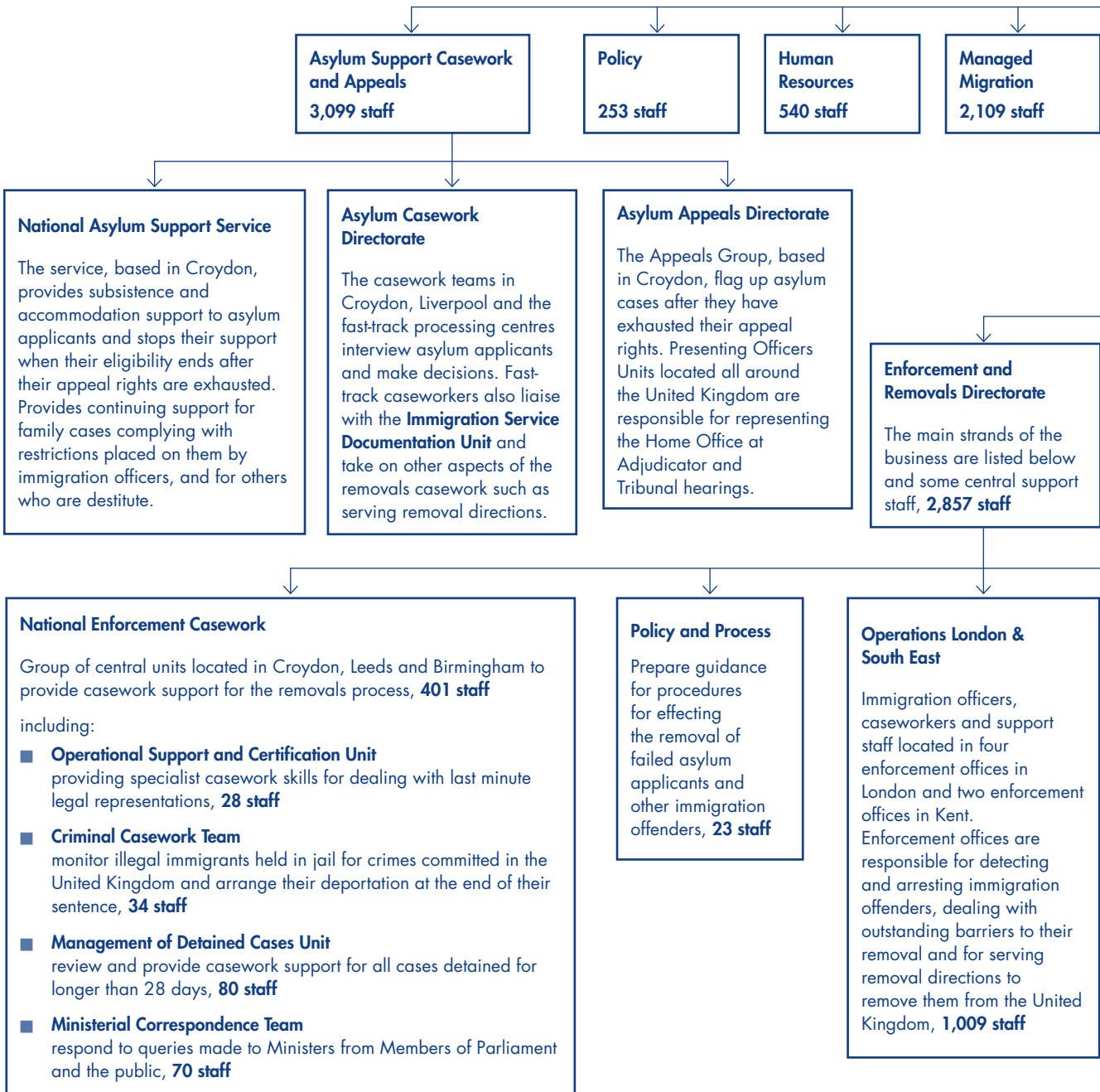


APPENDIX 6

Organisational structure of the Immigration and Nationality Directorate

Showing the key units for the removals process, their functions and staff numbers as at 31 March 2004



NOTE

The staff numbers in the diagrams represent the Directorate’s estimate of staff resources devoted to enforcement and removals. For some locations staff numbers are based on a split between the different functions carried out at ports and local enforcement offices. The Directorate realigned its staff resources in September 2004 to separate border control from enforcement and removals functions.

