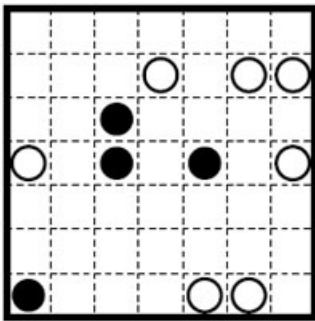


MASYU PUZZLE – HOW TO PLAY AND AN EXAMPLE

- 1) Draw a complete loop which passes through all squares containing a circle.
- 2) The loop can travel vertically or horizontally. It must not cross itself, branch off, or pass through the same square twice.
- 3) When passing through a square containing a white circle, the loop must turn 90-degrees in the previous and/or next square.
- 4) When passing through black circles, the loop must turn 90-degrees in the same square as the circle. It must pass straight through the previous and next square.

Game example



The finished game

